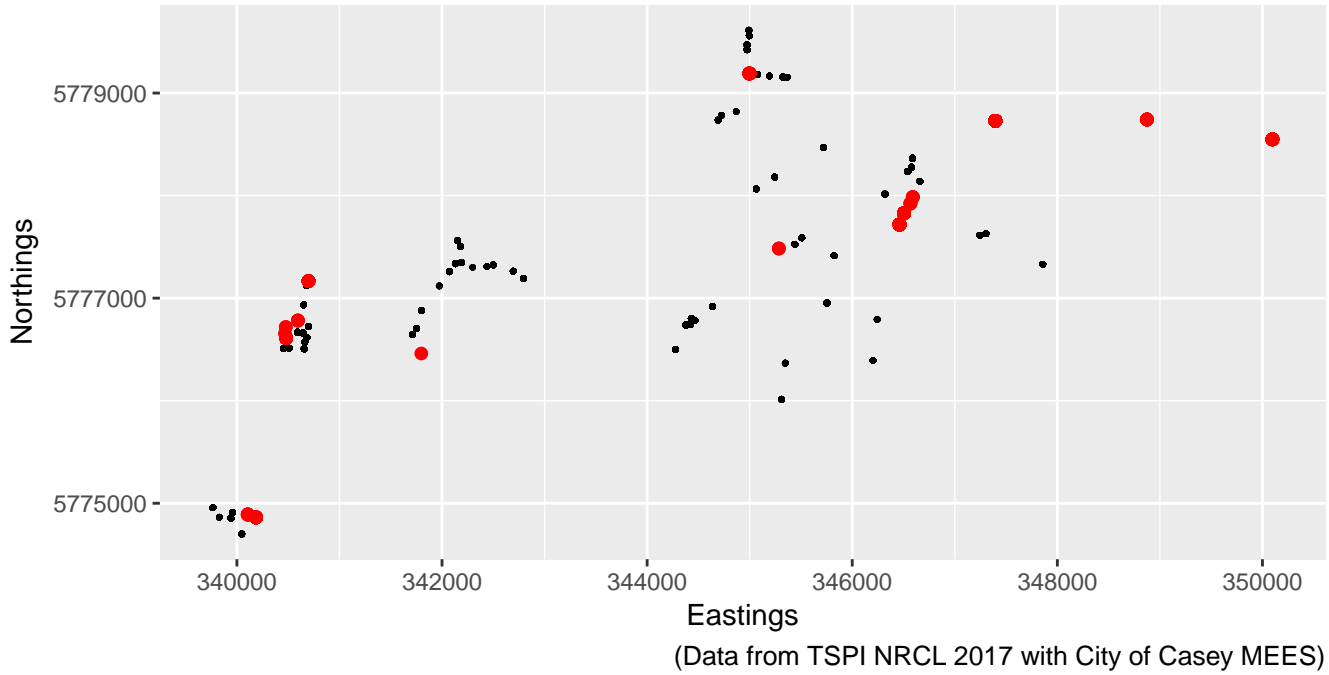


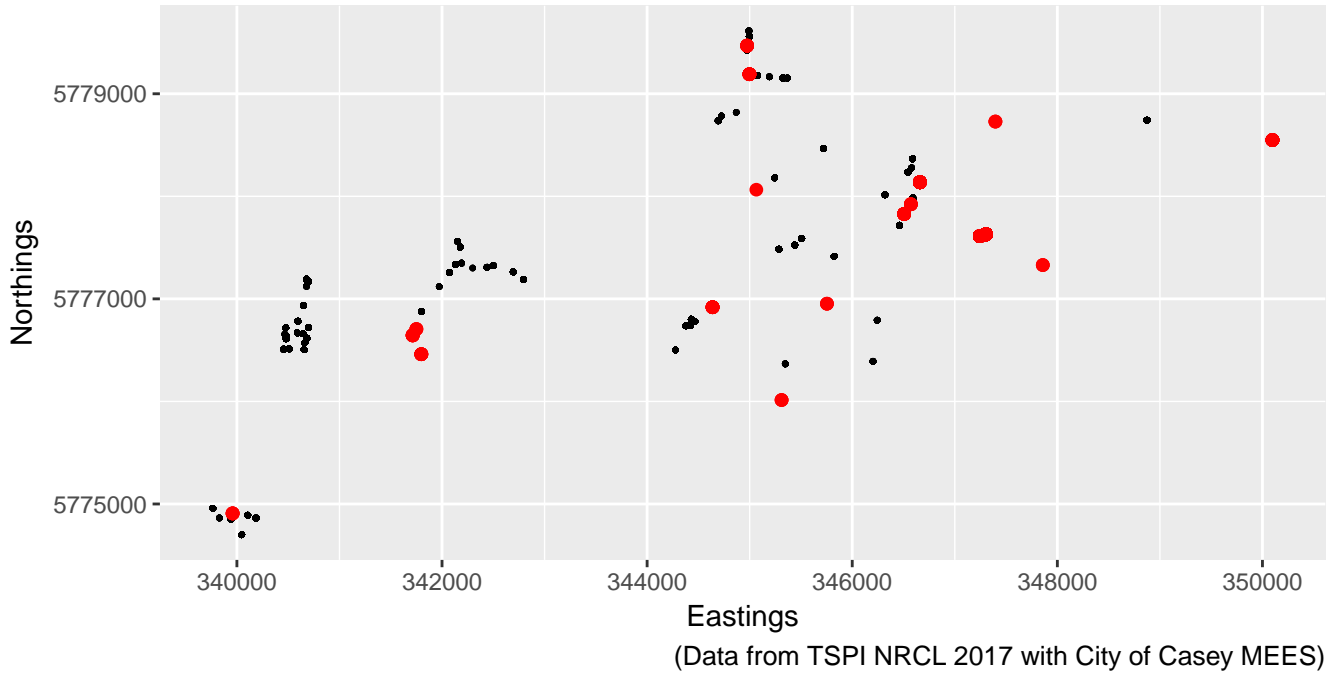
Distribution of Common Bronzewing

with camera stations, as 'black dot'

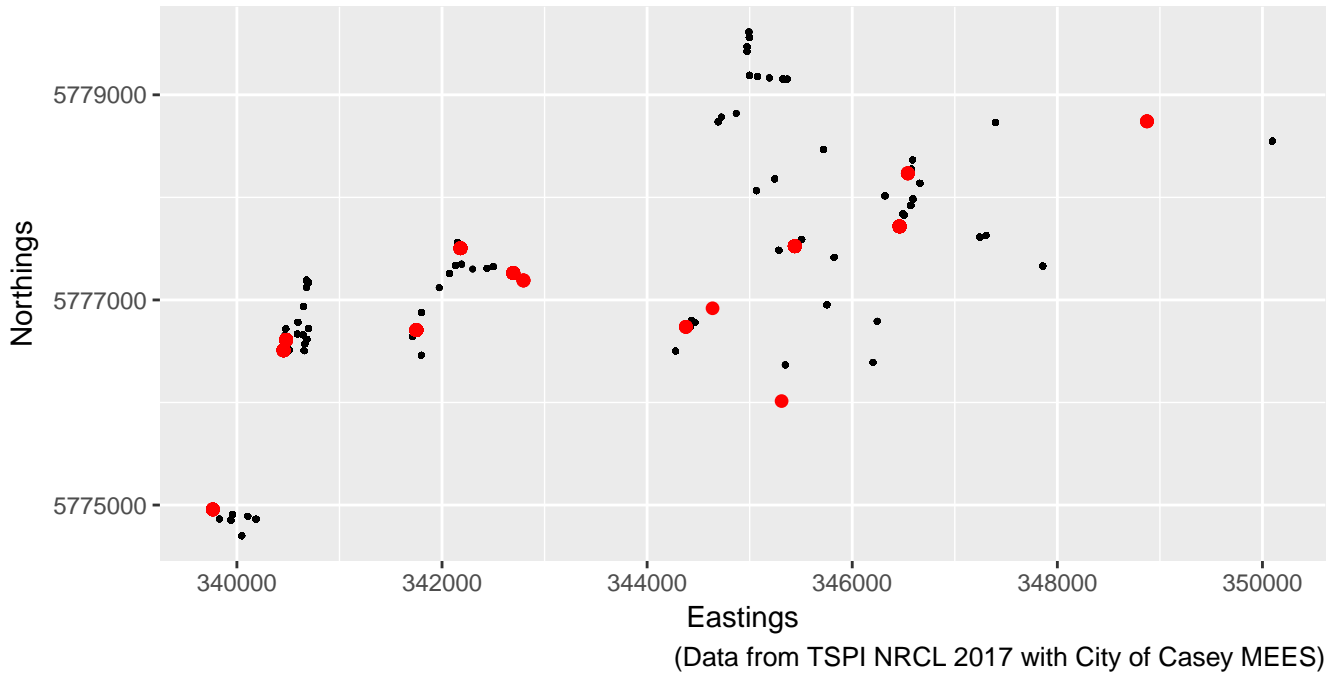


Distribution of House Mouse

with camera stations, as 'black dot'

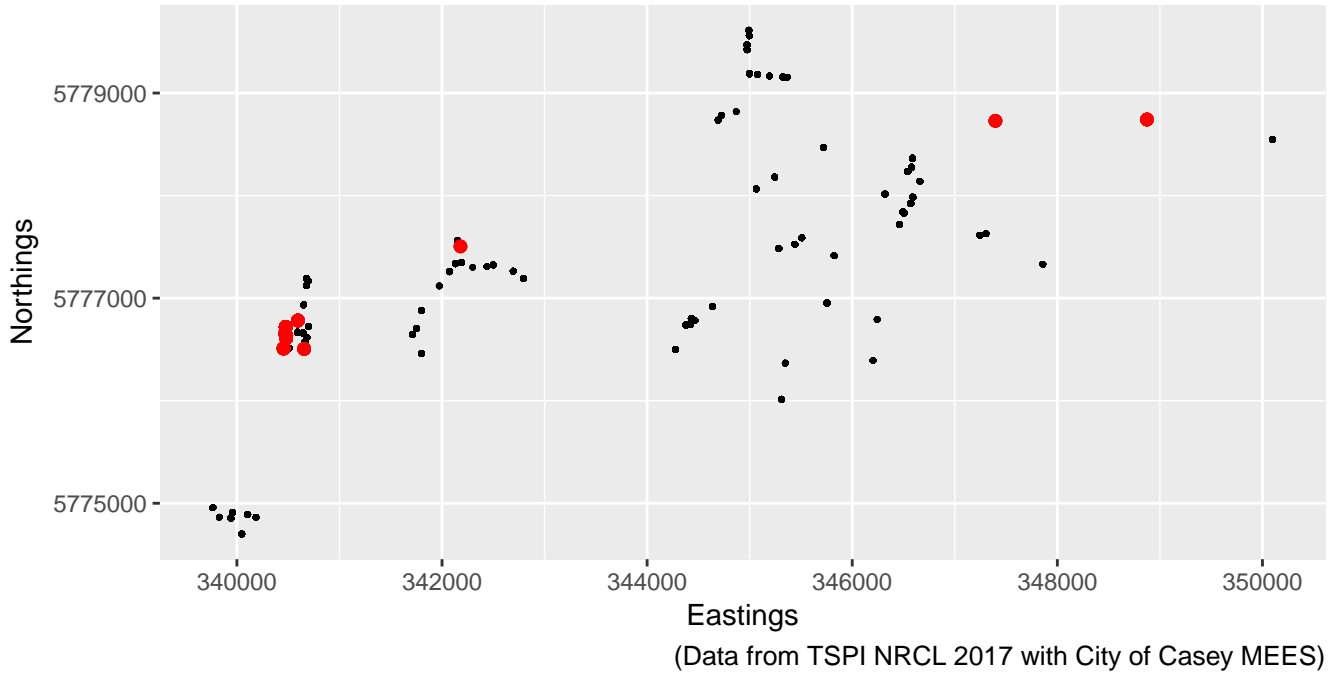


Distribution of Common Brushtail Possum
with camera stations, as 'black dot'



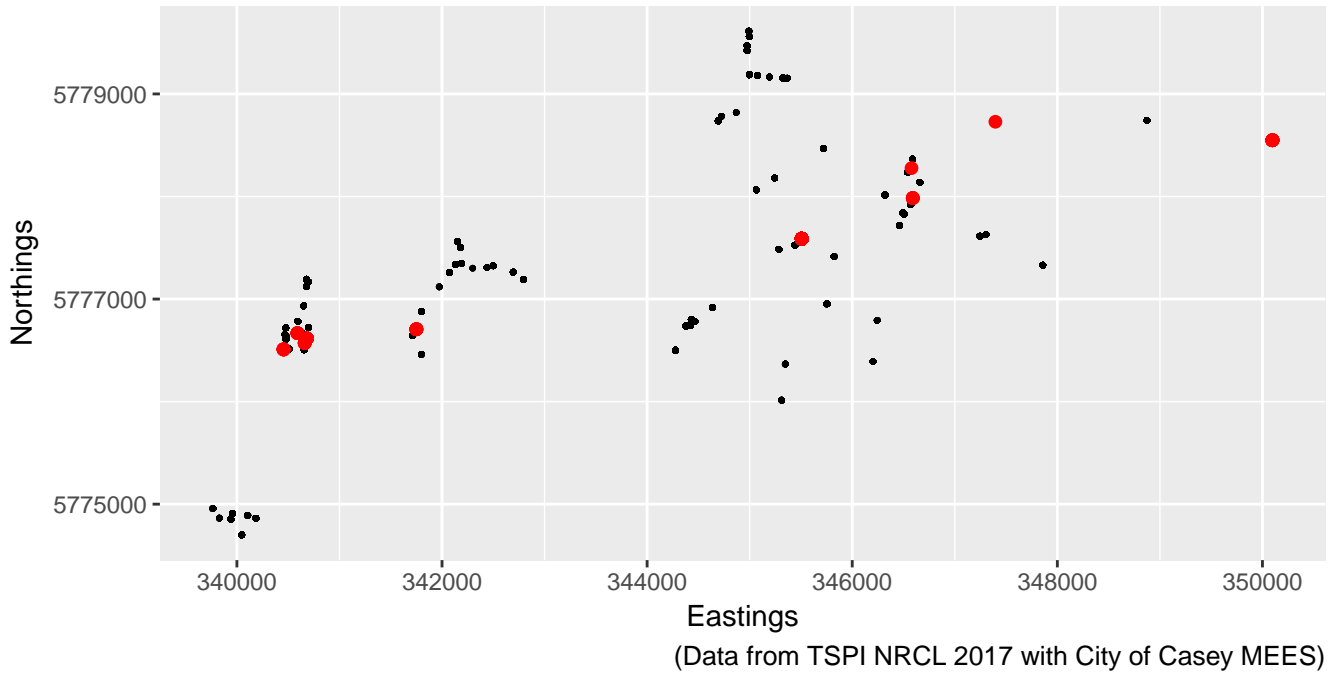
Distribution of Brush Bronzewing

with camera stations, as 'black dot'



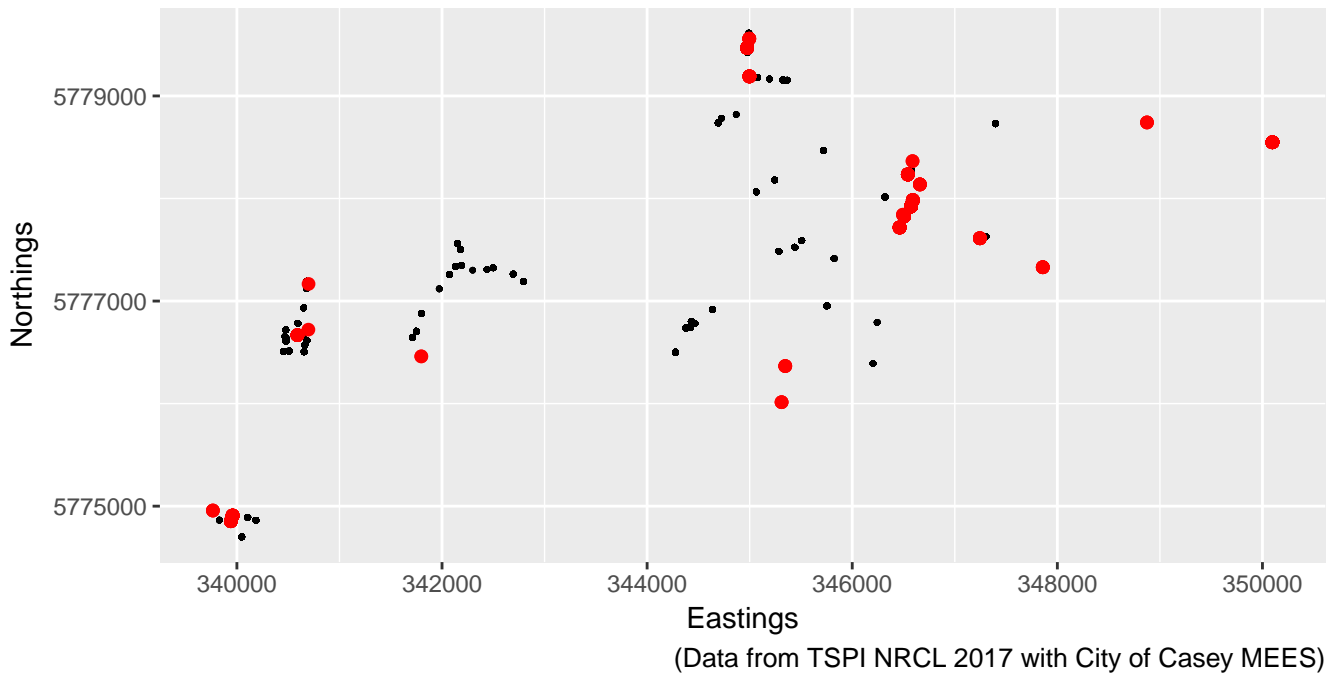
Distribution of Grey Shrike-thrush

with camera stations, as 'black dot'

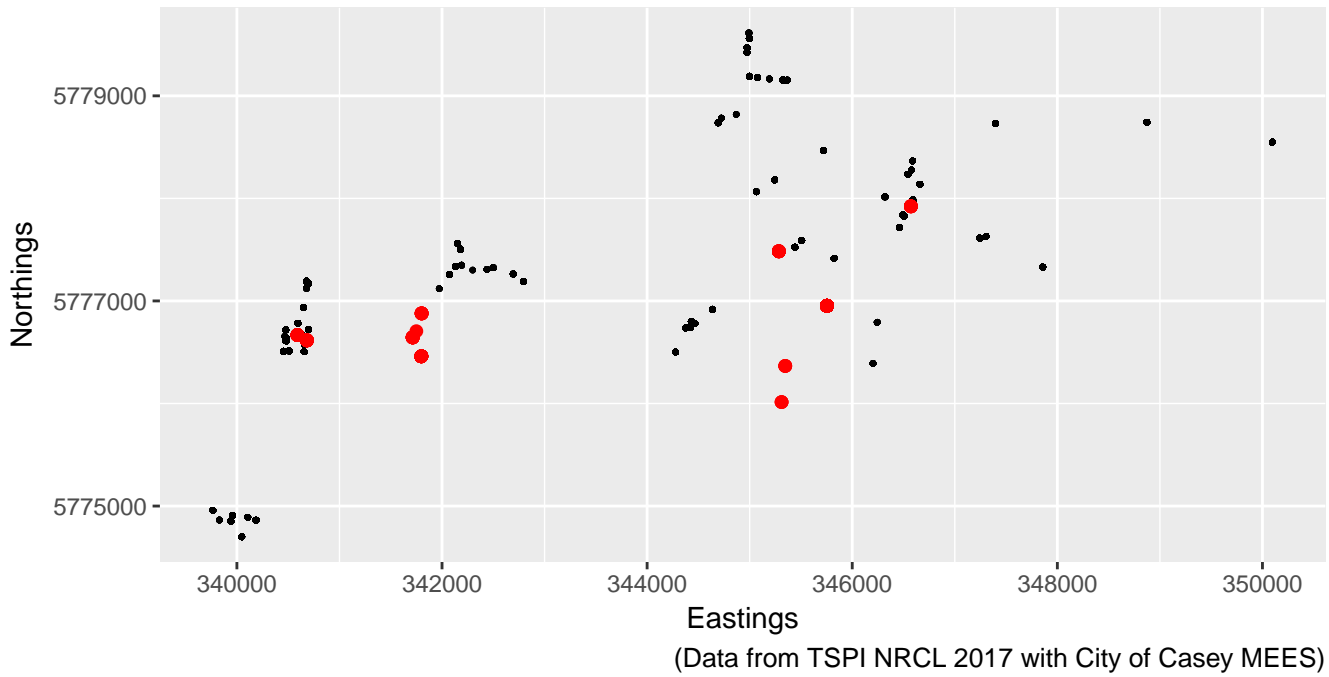


Distribution of Superb Fairy-wren

with camera stations, as 'black dot'

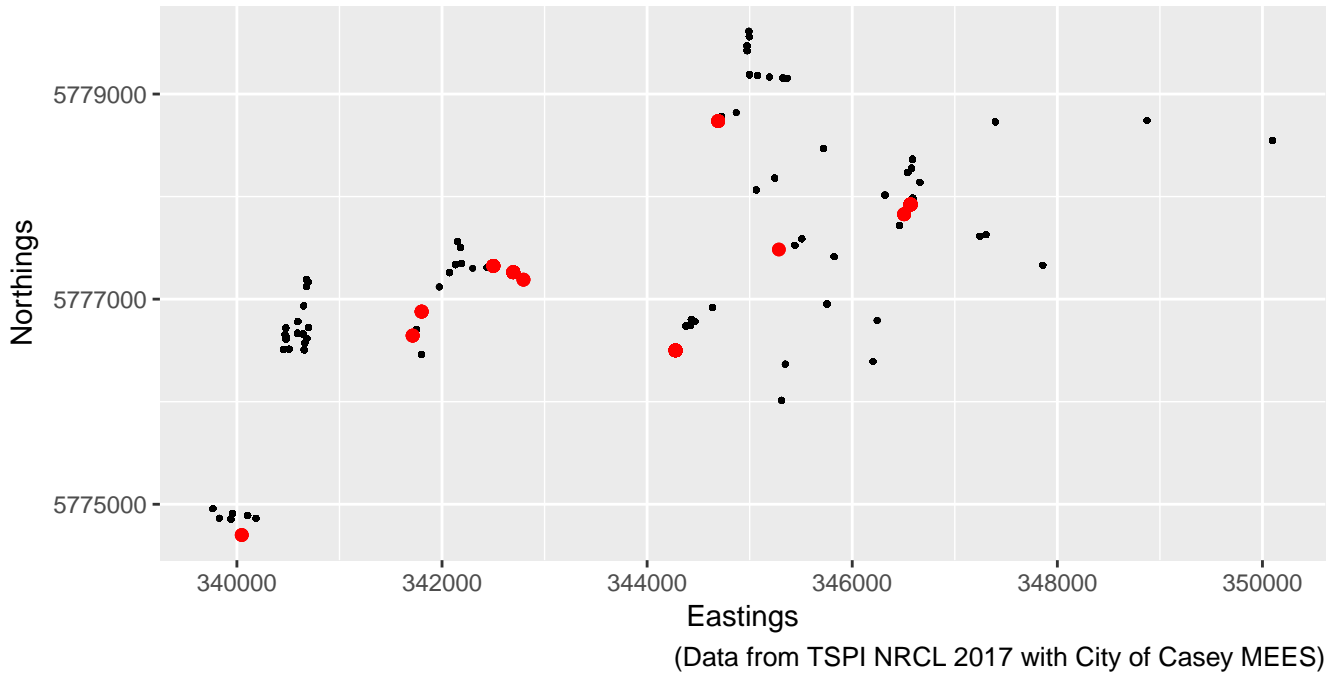


Distribution of Swamp Rat
with camera stations, as 'black dot'



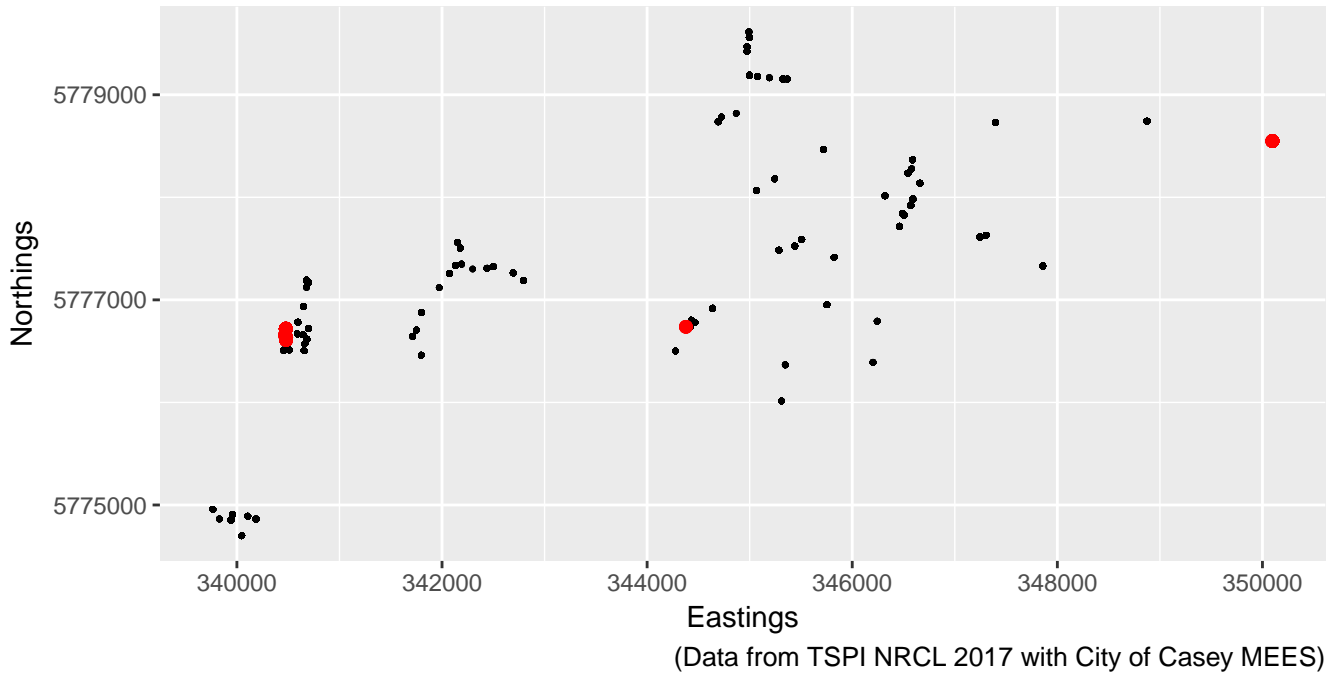
Distribution of Common Ringtail Possum

with camera stations, as 'black dot'



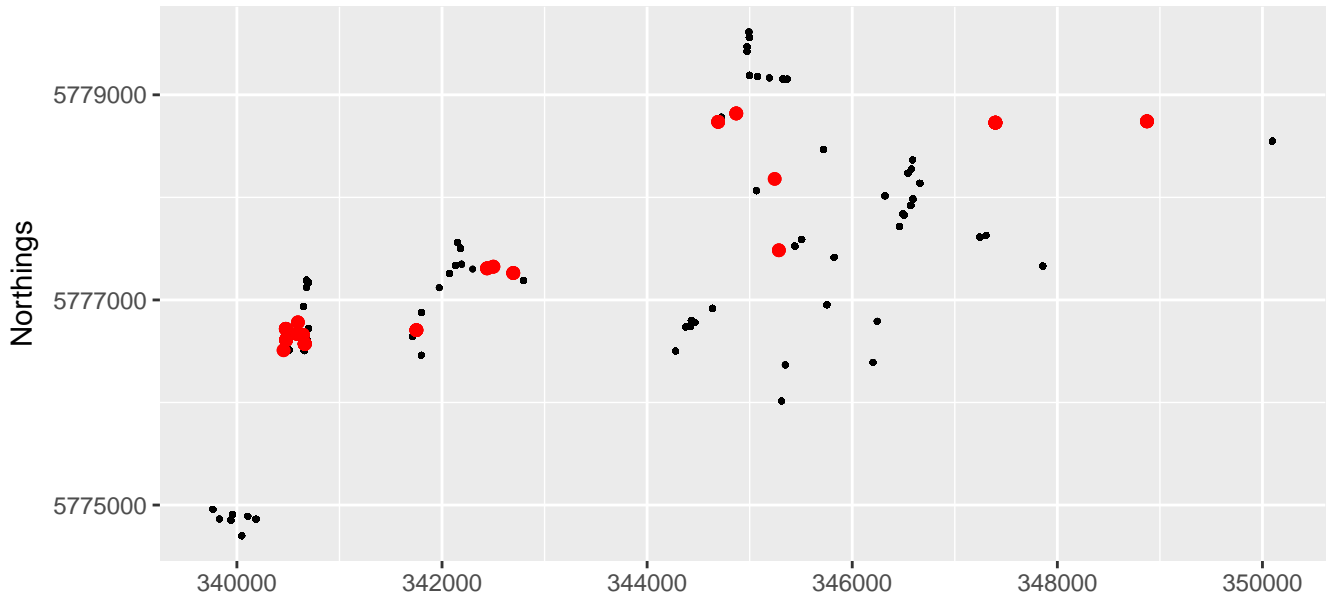
Distribution of Bassian Thrush

with camera stations, as 'black dot'



Distribution of Short-beaked Echidna

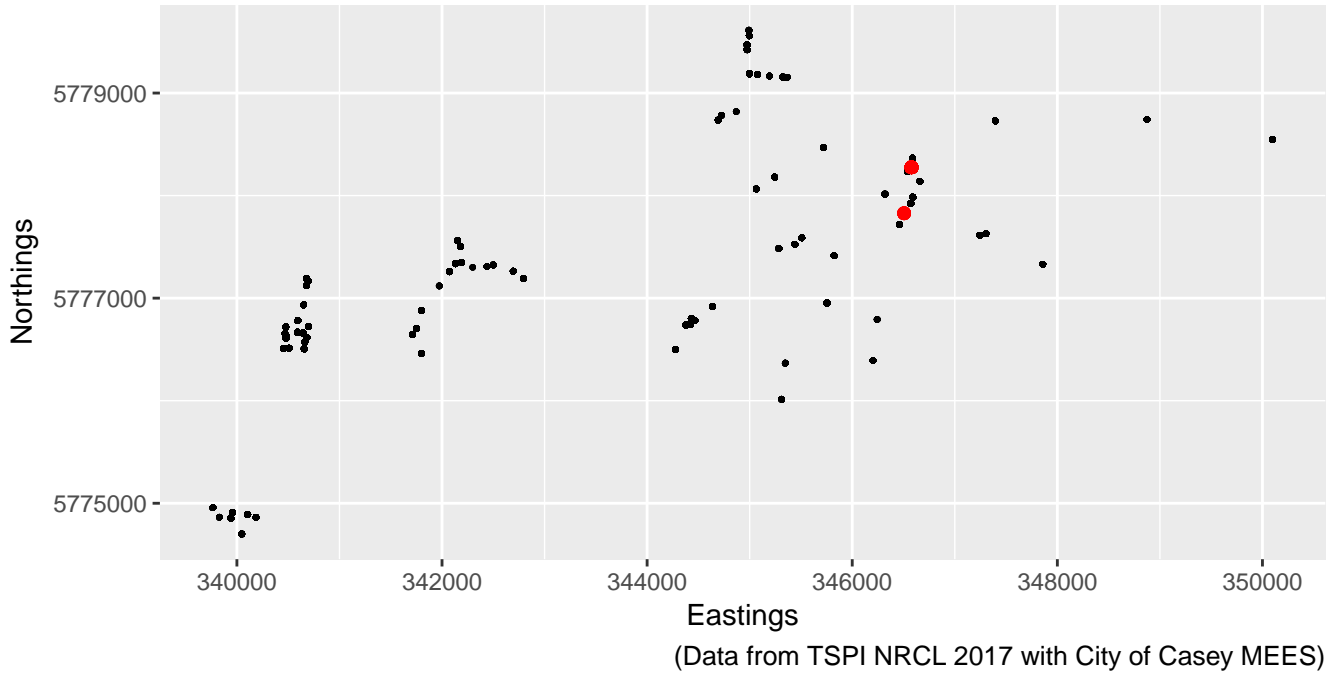
with camera stations, as 'black dot'



(Data from TSPI NRCL 2017 with City of Casey MEES)

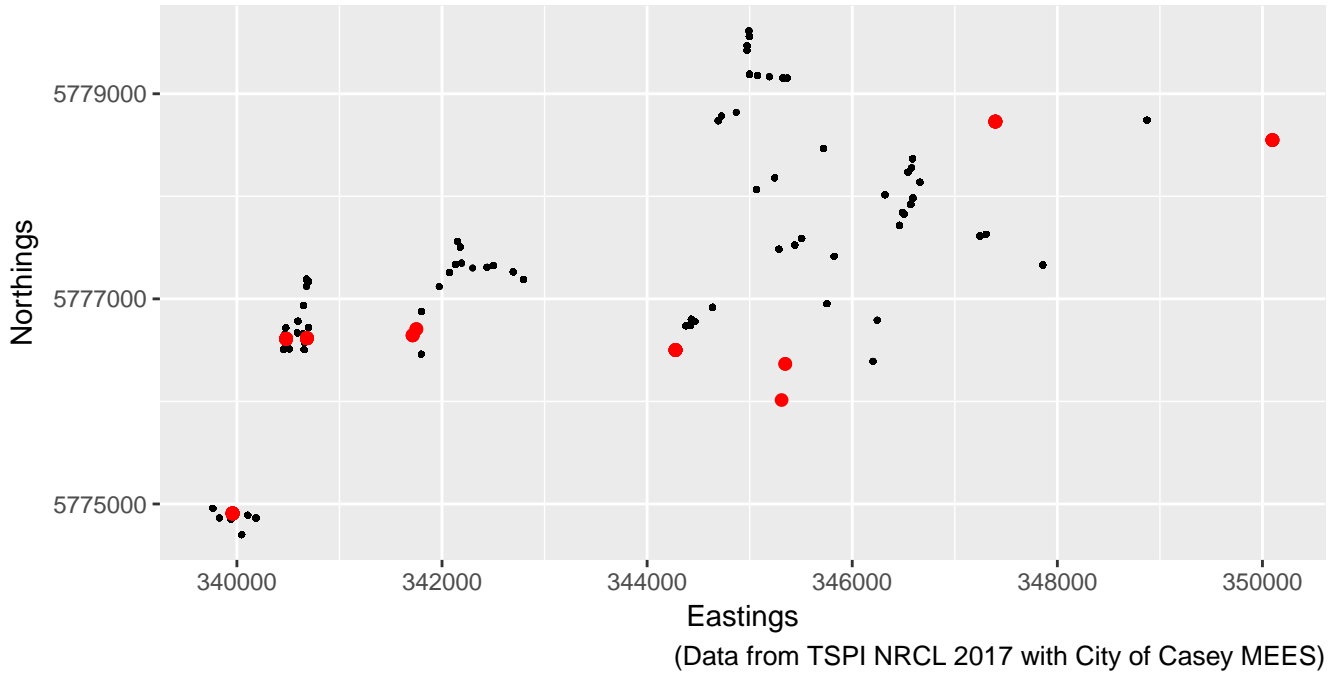
Distribution of Eastern Grey Kangaroo

with camera stations, as 'black dot'



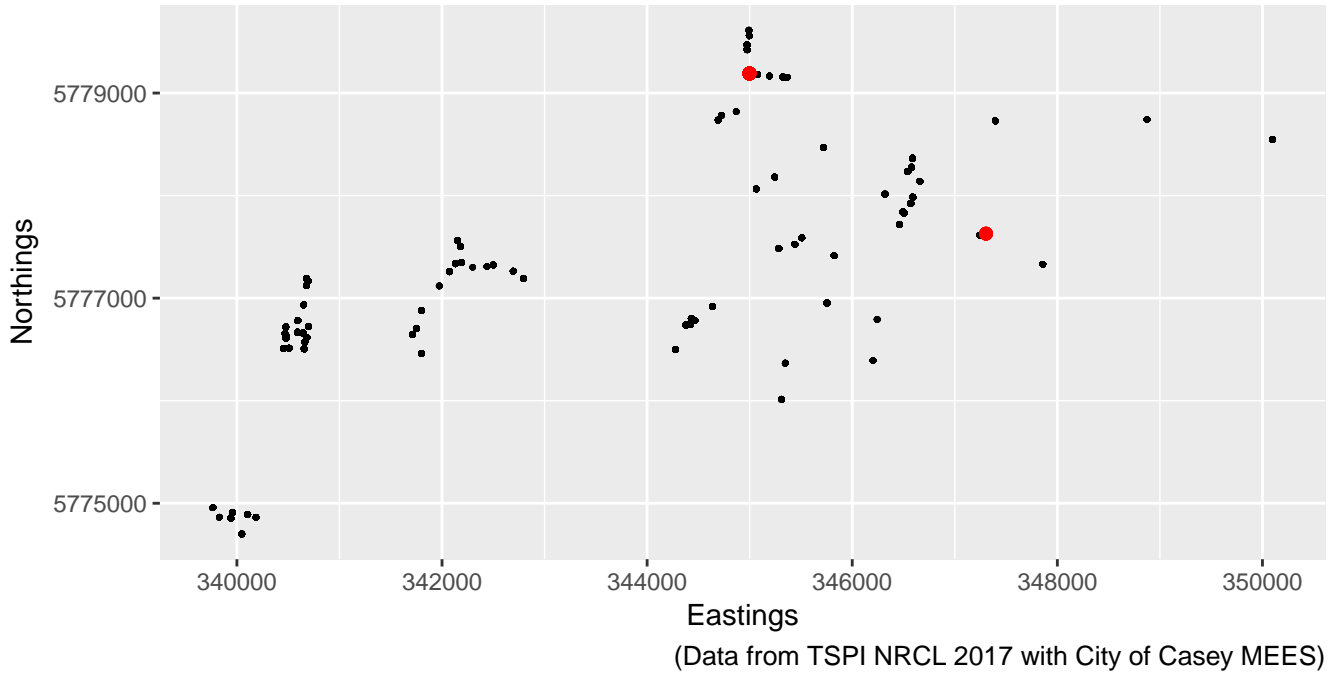
Distribution of Eastern Yellow Robin

with camera stations, as 'black dot'



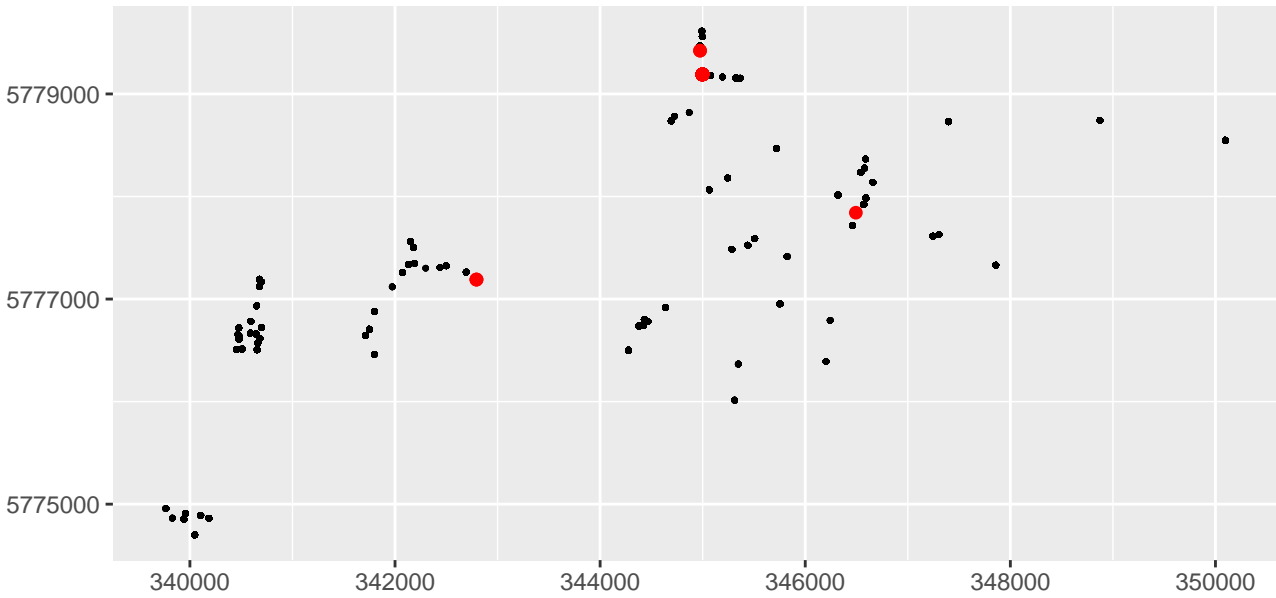
Distribution of Song Thrush

with camera stations, as 'black dot'



Distribution of C Myna

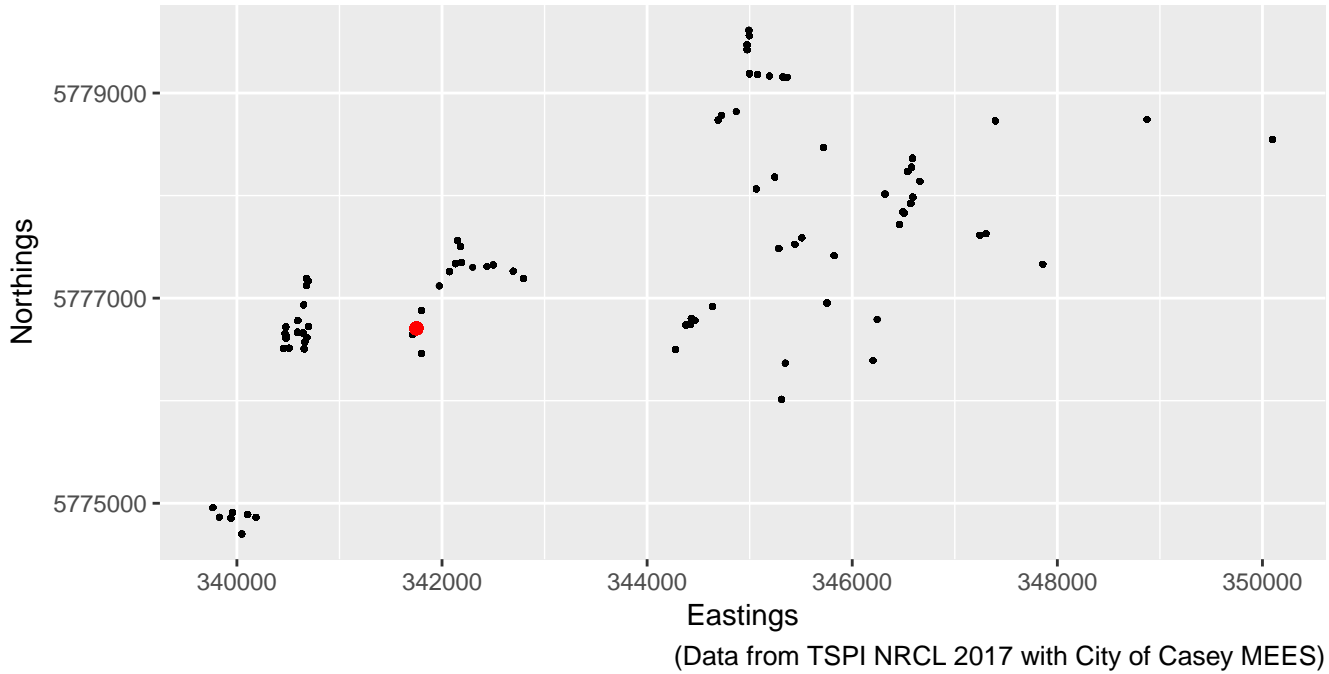
with camera stations, as 'black dot'



Eastings
(Data from TSPI NRCL 2017 with City of Casey MEES)

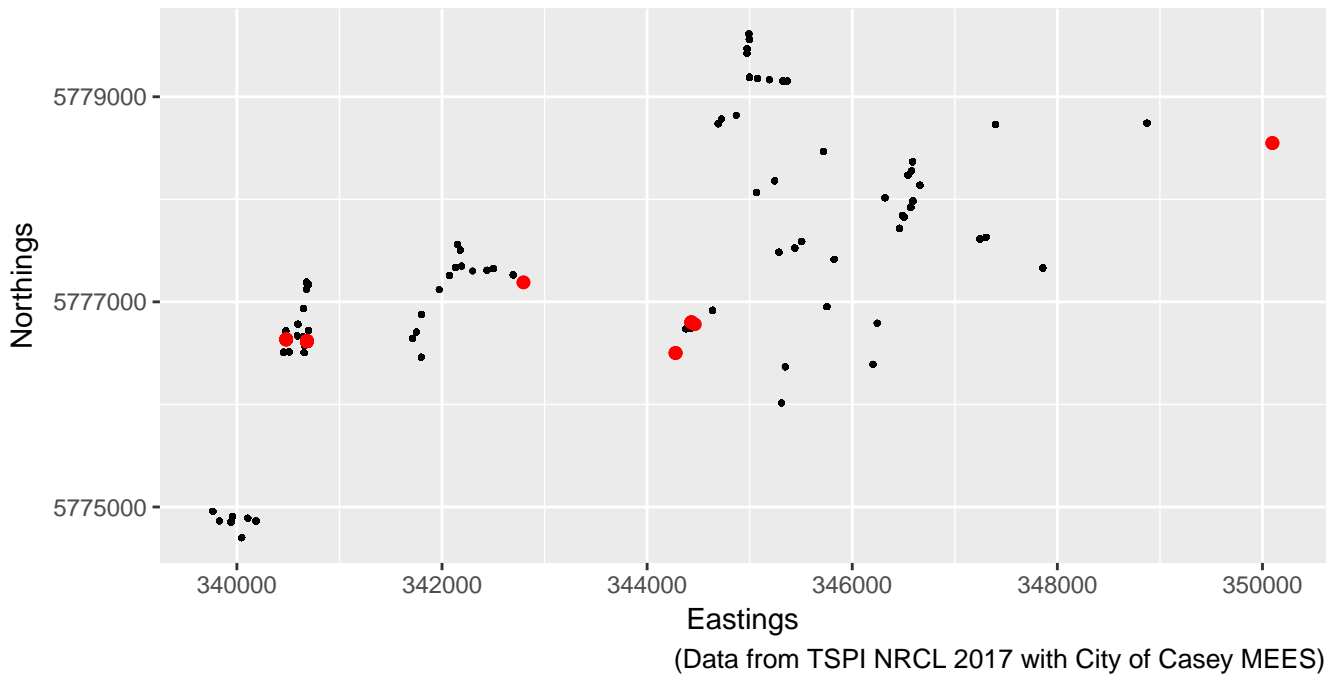
Distribution of Laughing Kookaburra

with camera stations, as 'black dot'



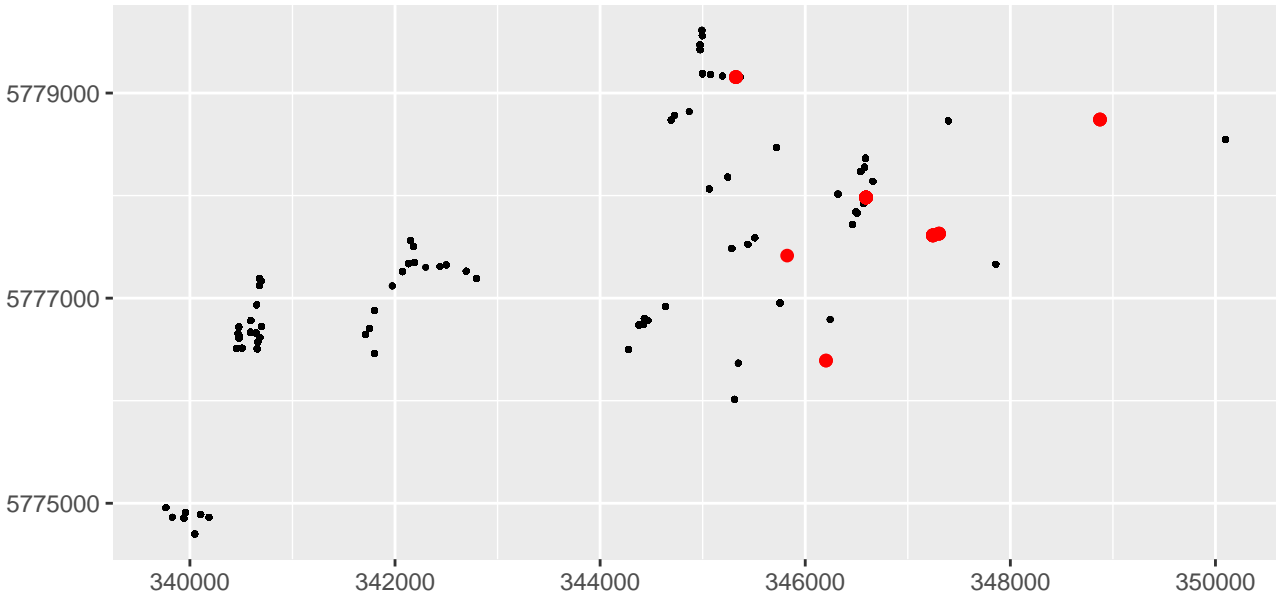
Distribution of bird

with camera stations, as 'black dot'



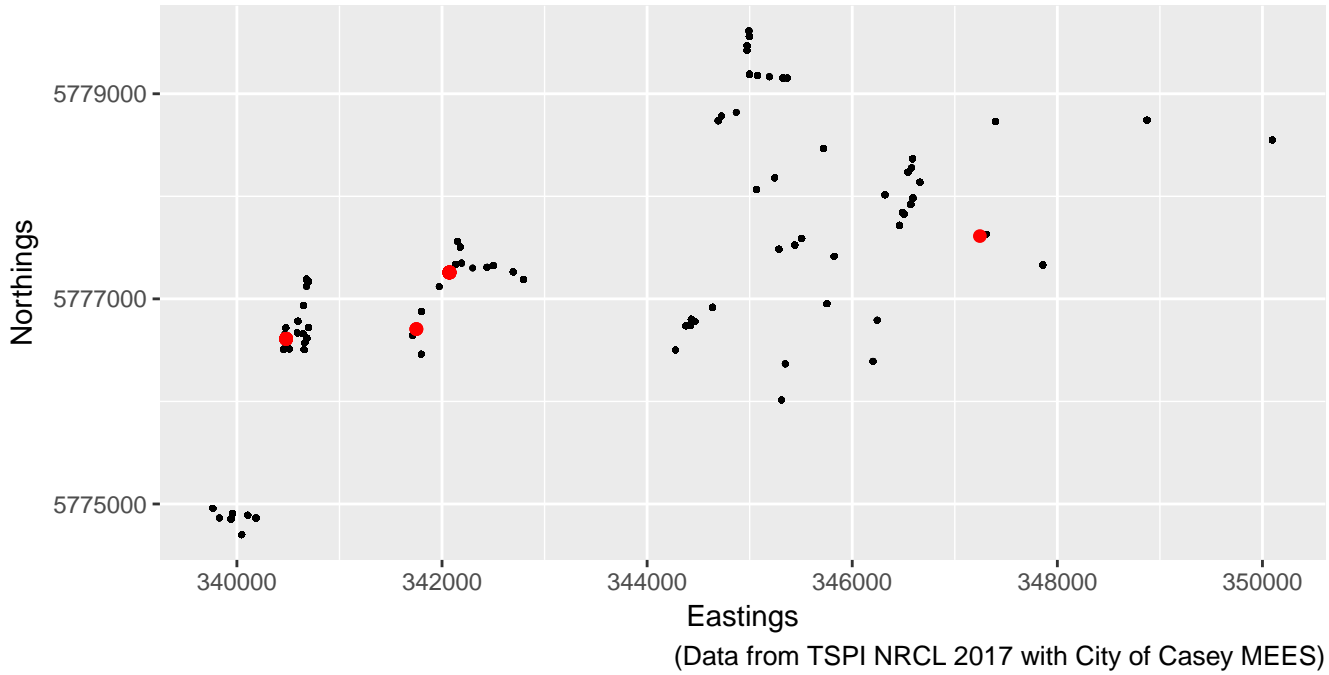
Distribution of Dog

with camera stations, as 'black dot'



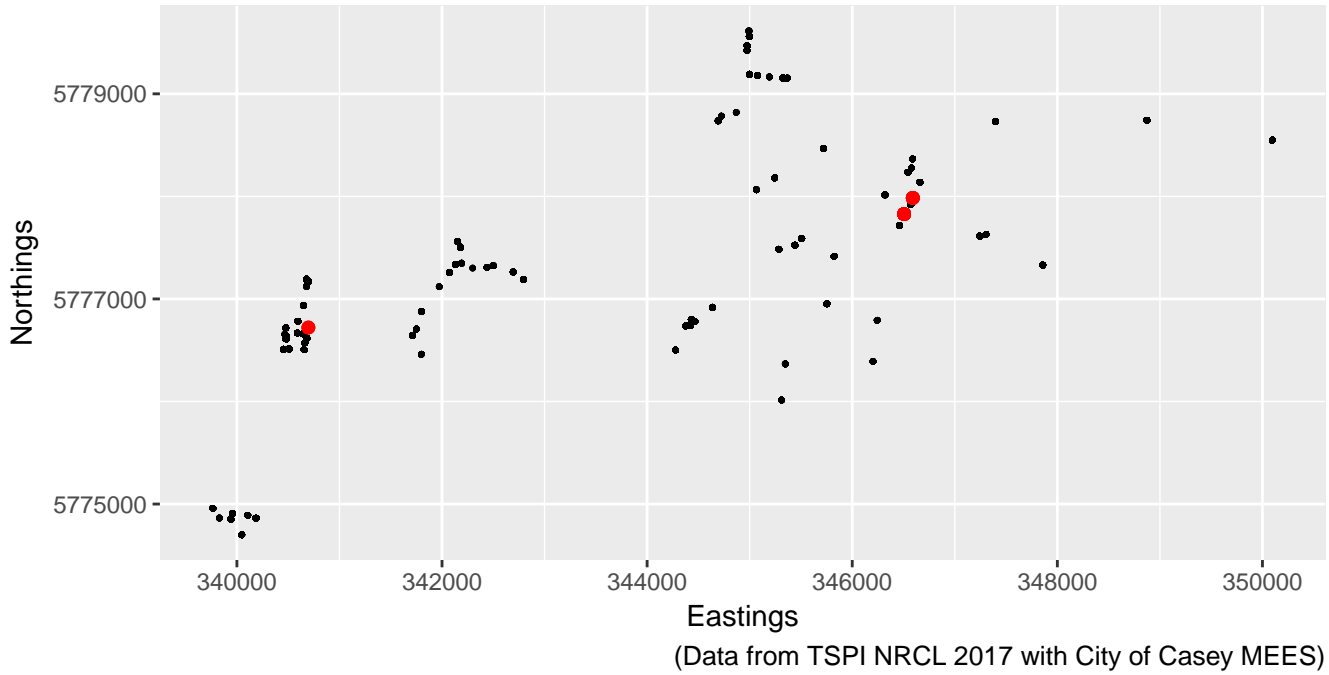
(Data from TSPI NRCL 2017 with City of Casey MEES)

Distribution of Human
with camera stations, as 'black dot'



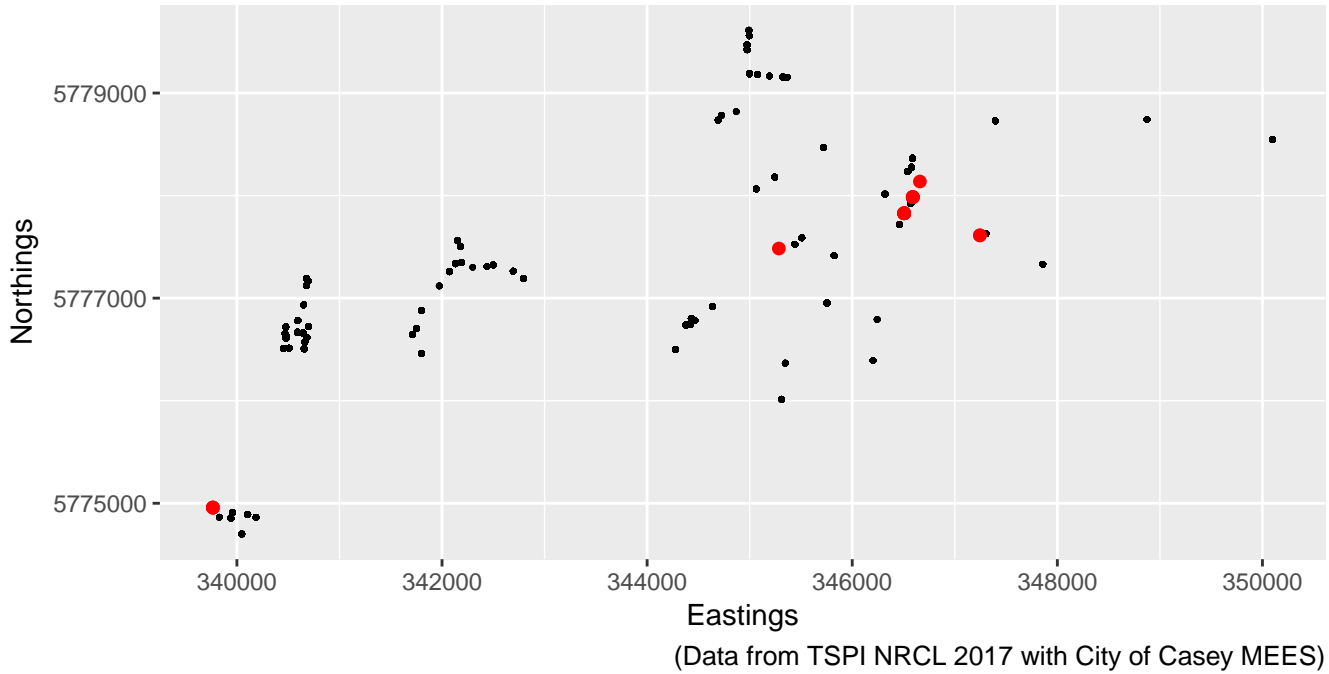
Distribution of Purple Swamphen

with camera stations, as 'black dot'



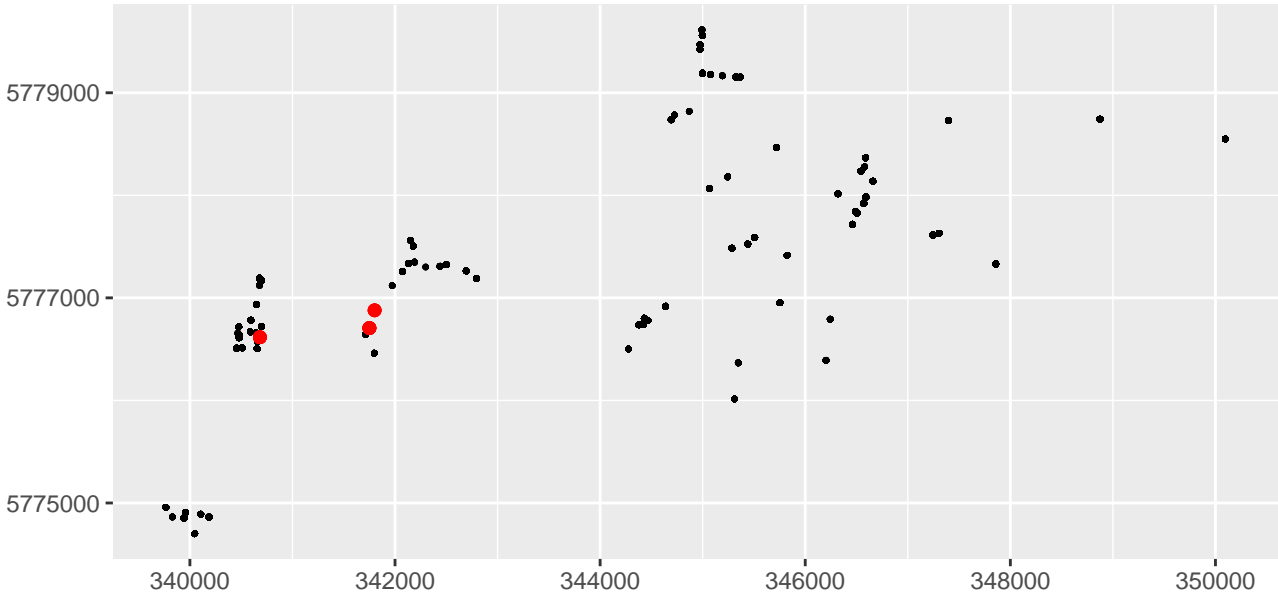
Distribution of Australian Magpie

with camera stations, as 'black dot'



Distribution of Lewins Rail

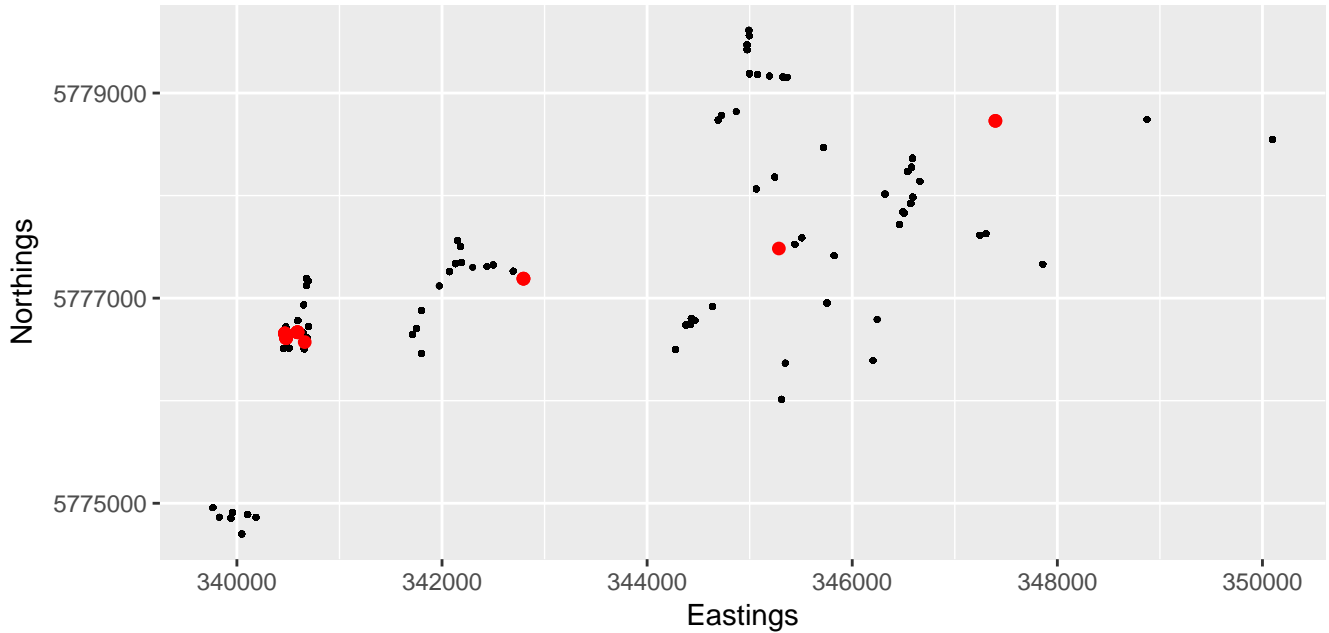
with camera stations, as 'black dot'



(Data from TSPI NRCL 2017 with City of Casey MEES)

Distribution of Blotched Blue-tongue Lizard

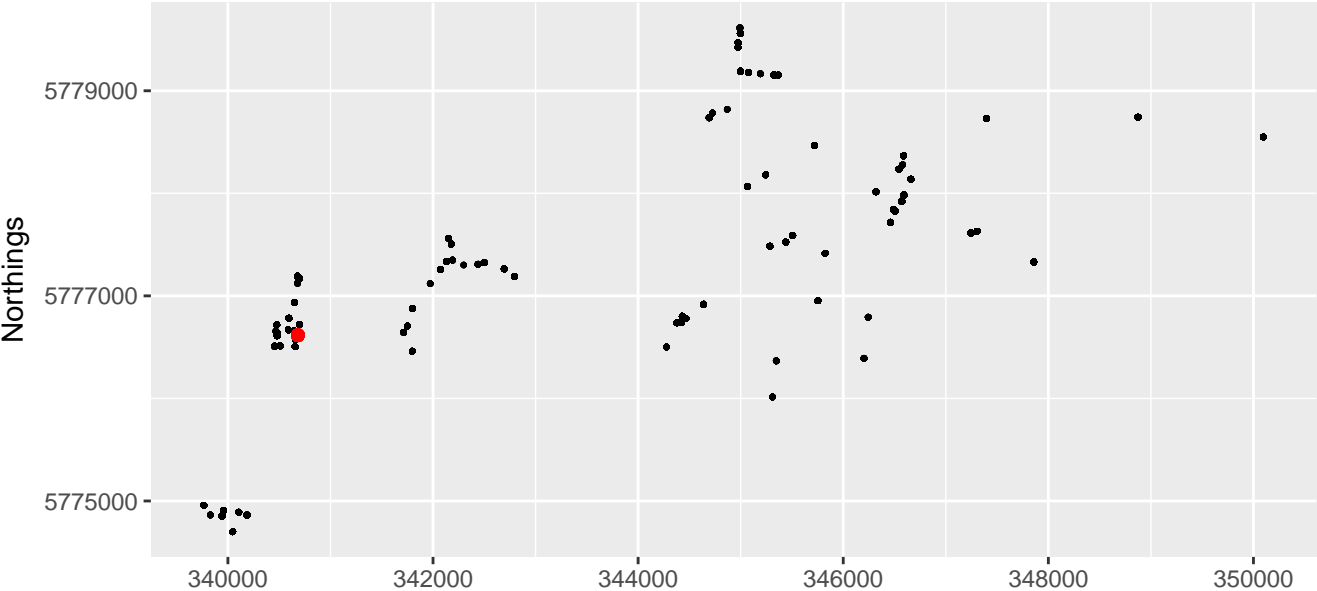
with camera stations, as 'black dot'



(Data from TSPI NRCL 2017 with City of Casey MEES)

Distribution of Buff-banded Rail

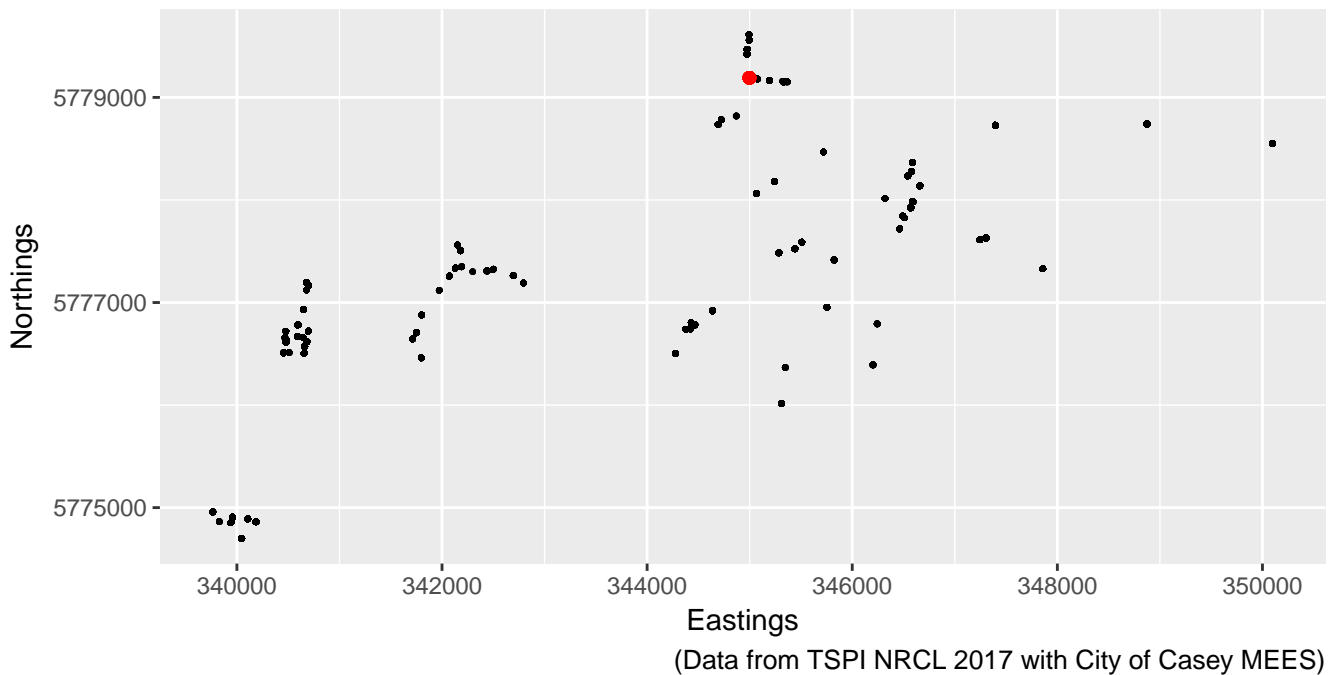
with camera stations, as 'black dot'



(Data from TSPI NRCL 2017 with City of Casey MEES)

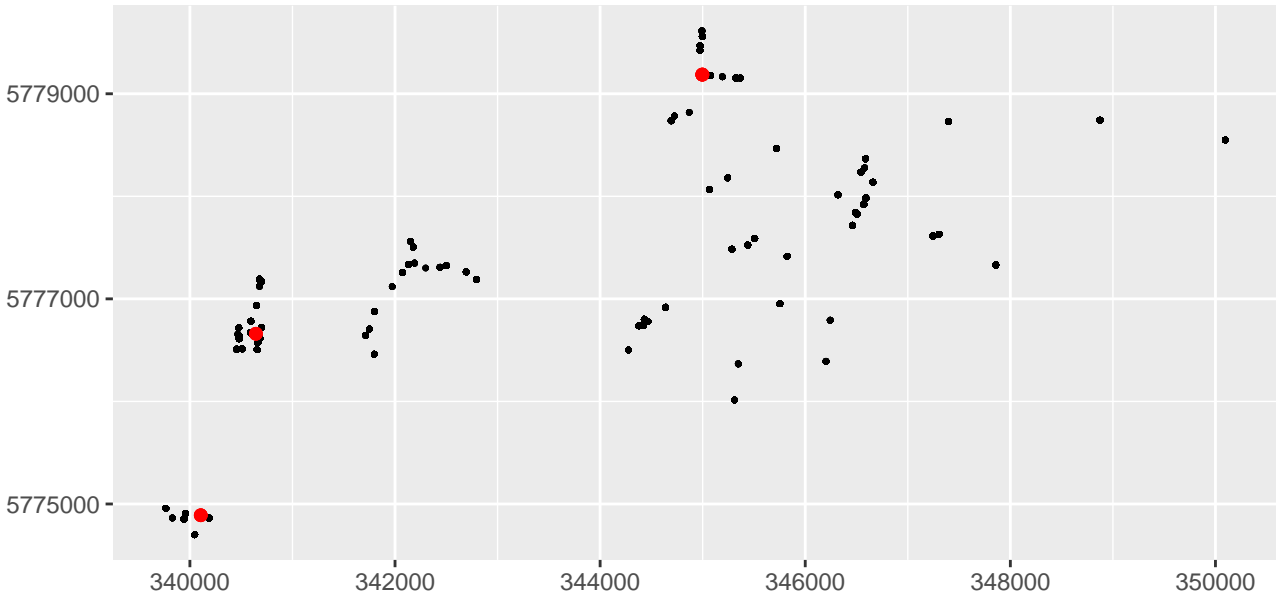
Distribution of Painted Button Quail

with camera stations, as 'black dot'



Distribution of Brown Thornbill

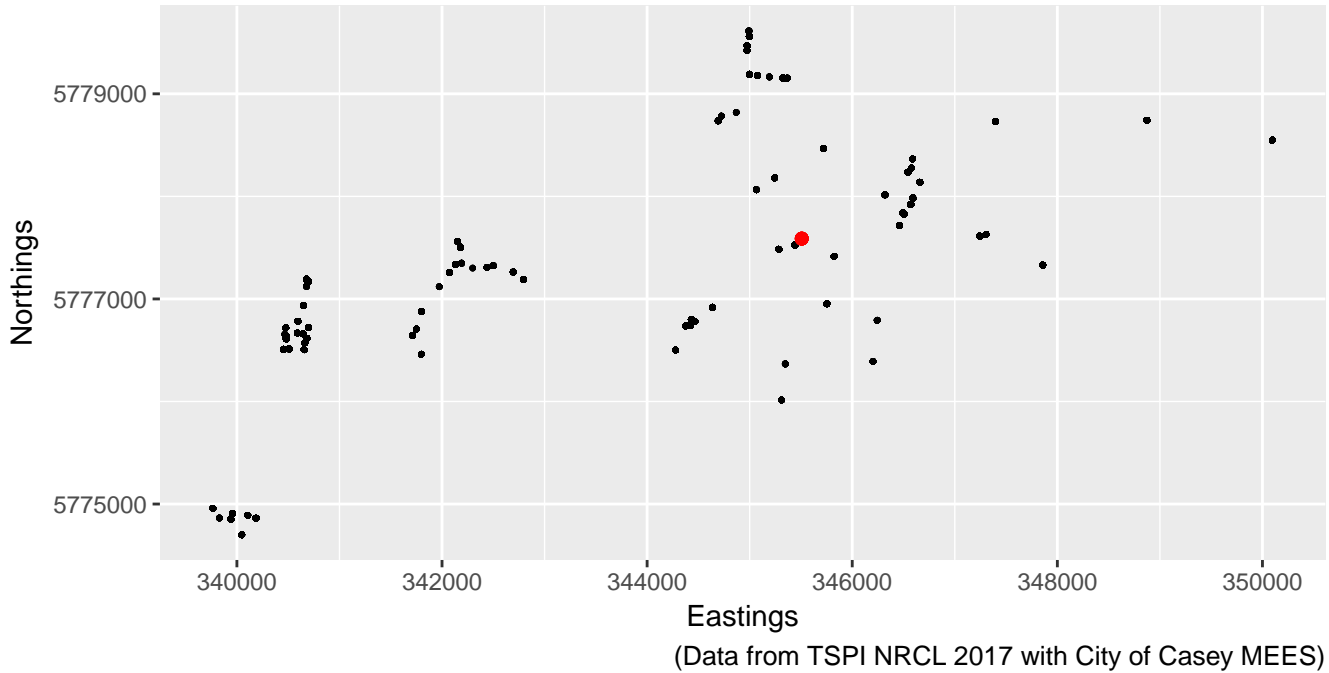
with camera stations, as 'black dot'



(Data from TSPI NRCL 2017 with City of Casey MEES)

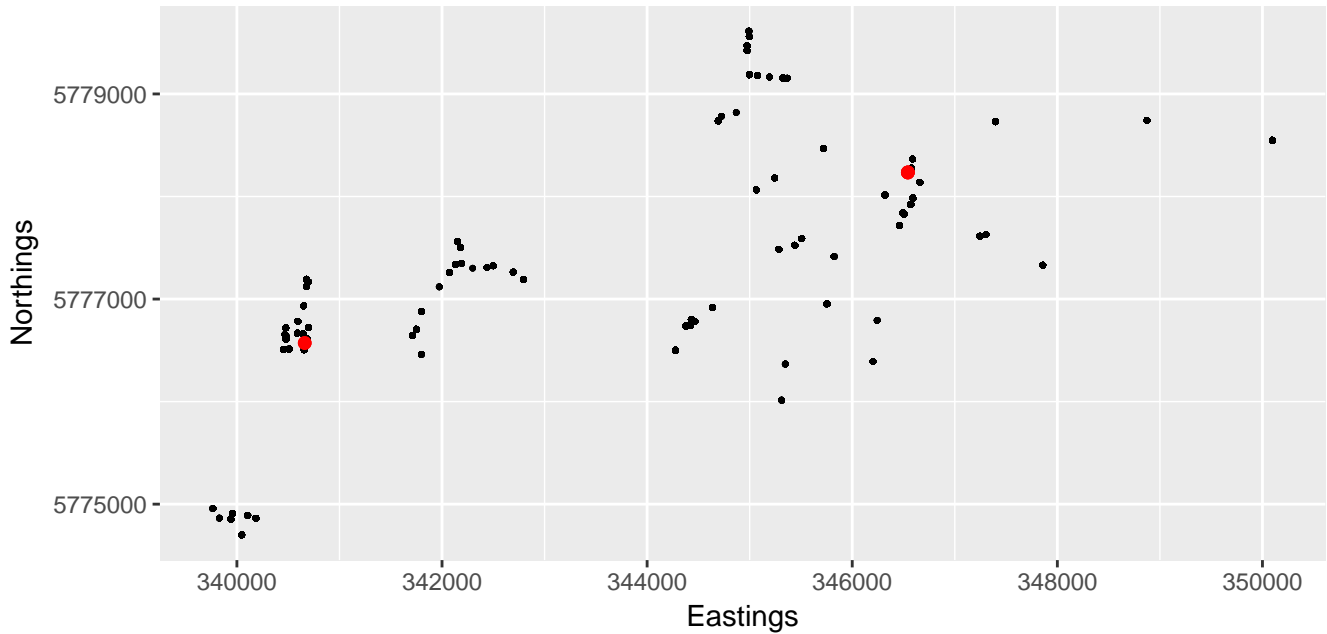
Distribution of Delicate Skink

with camera stations, as 'black dot'



Distribution of Grey Fantail

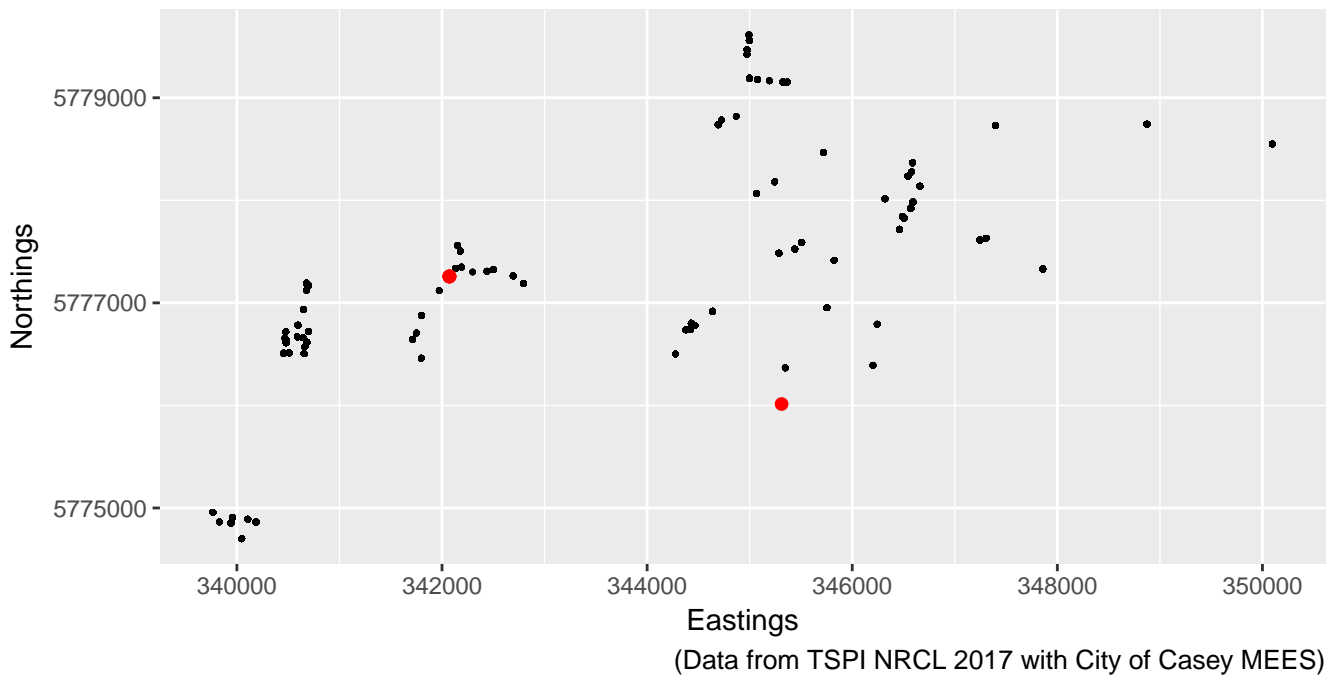
with camera stations, as 'black dot'



(Data from TSPI NRCL 2017 with City of Casey MEES)

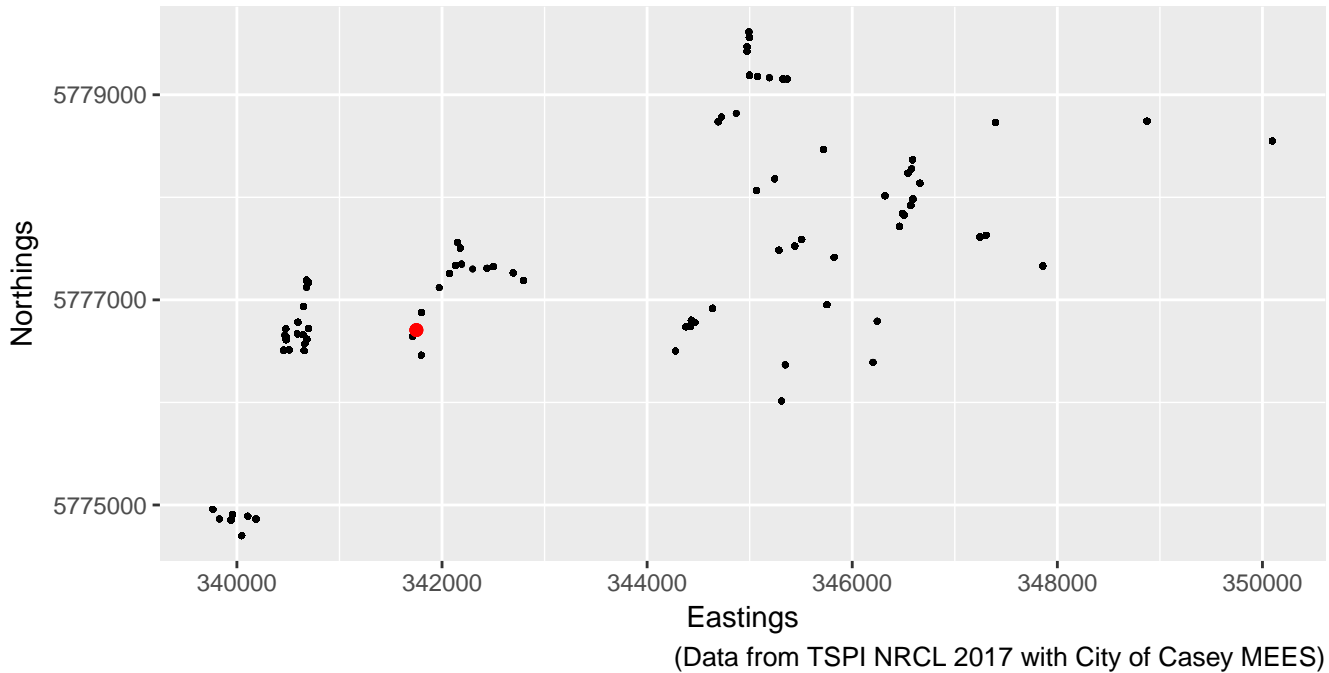
Distribution of Red-browed Finch

with camera stations, as 'black dot'



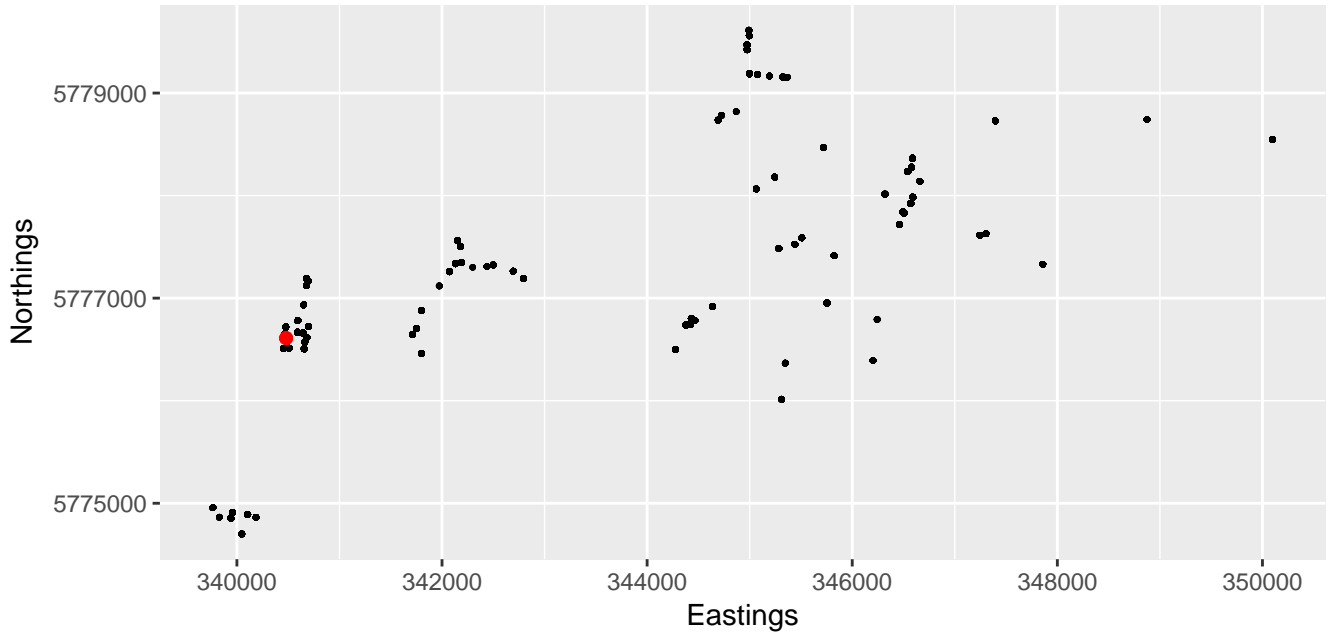
Distribution of Pacific Black Duck

with camera stations, as 'black dot'



Distribution of Common Long-necked Tortoise

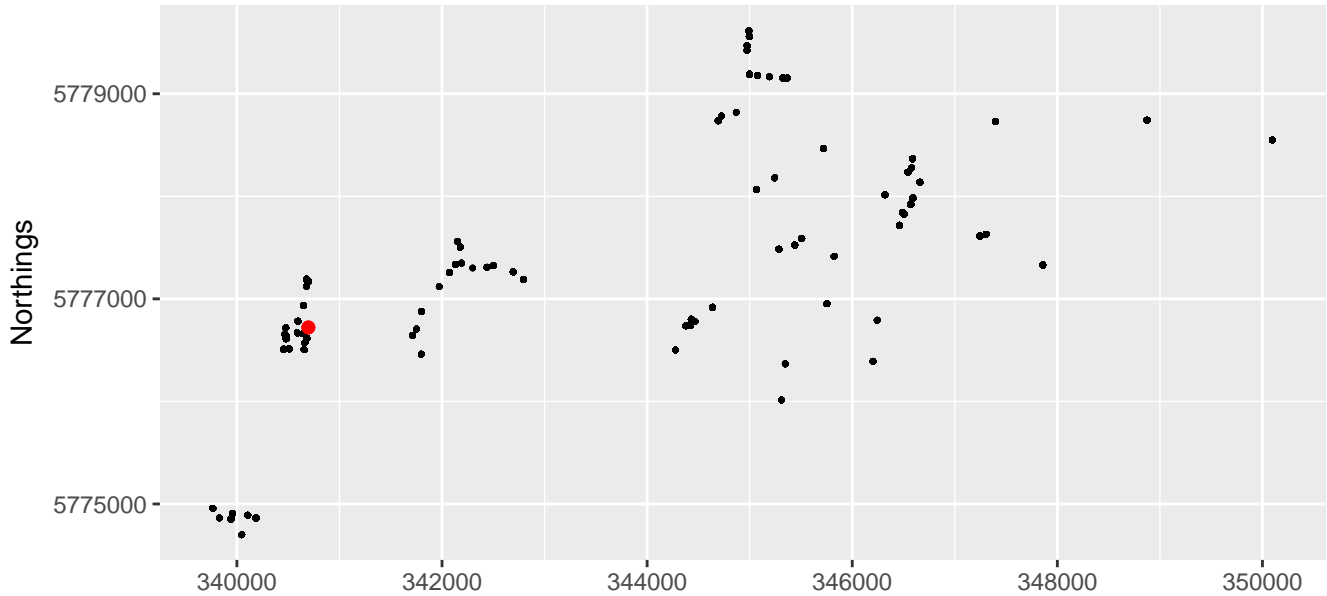
with camera stations, as 'black dot'



(Data from TSPI NRCL 2017 with City of Casey MEES)

Distribution of Australian Raven

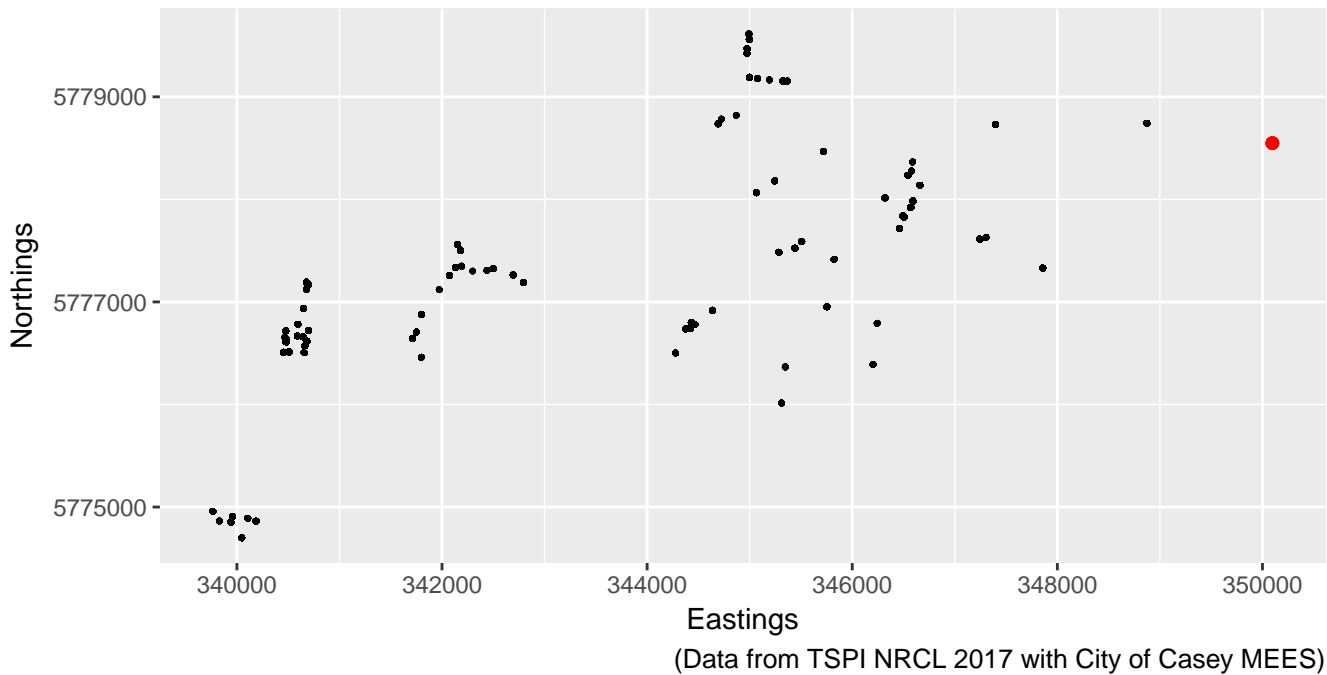
with camera stations, as 'black dot'



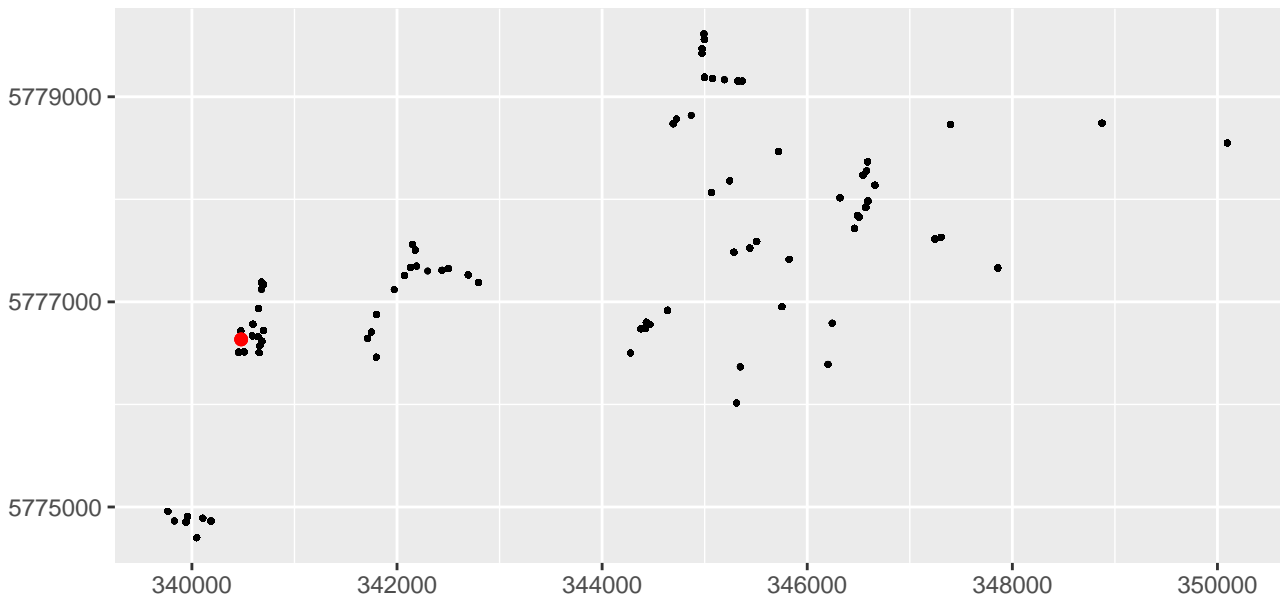
(Data from TSPI NRCL 2017 with City of Casey MEES)

Distribution of Copperhead Snake

with camera stations, as 'black dot'

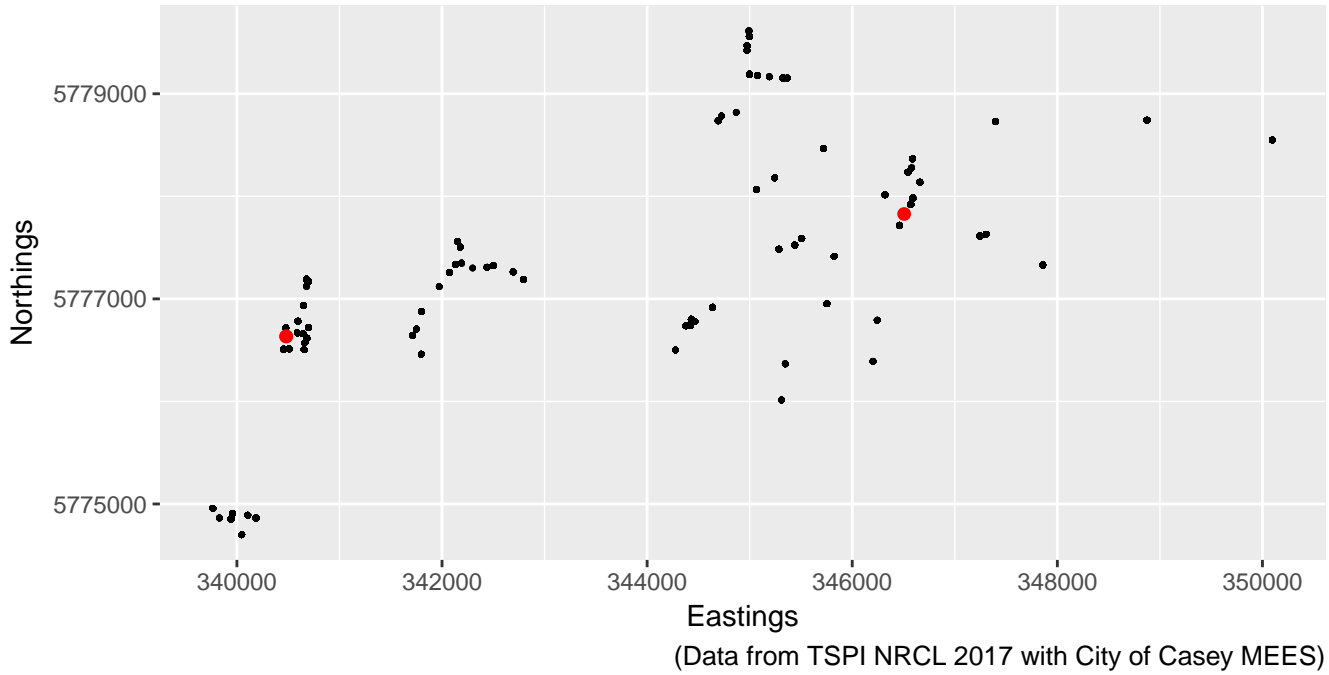


Distribution of invertebrate with camera stations, as 'black dot'



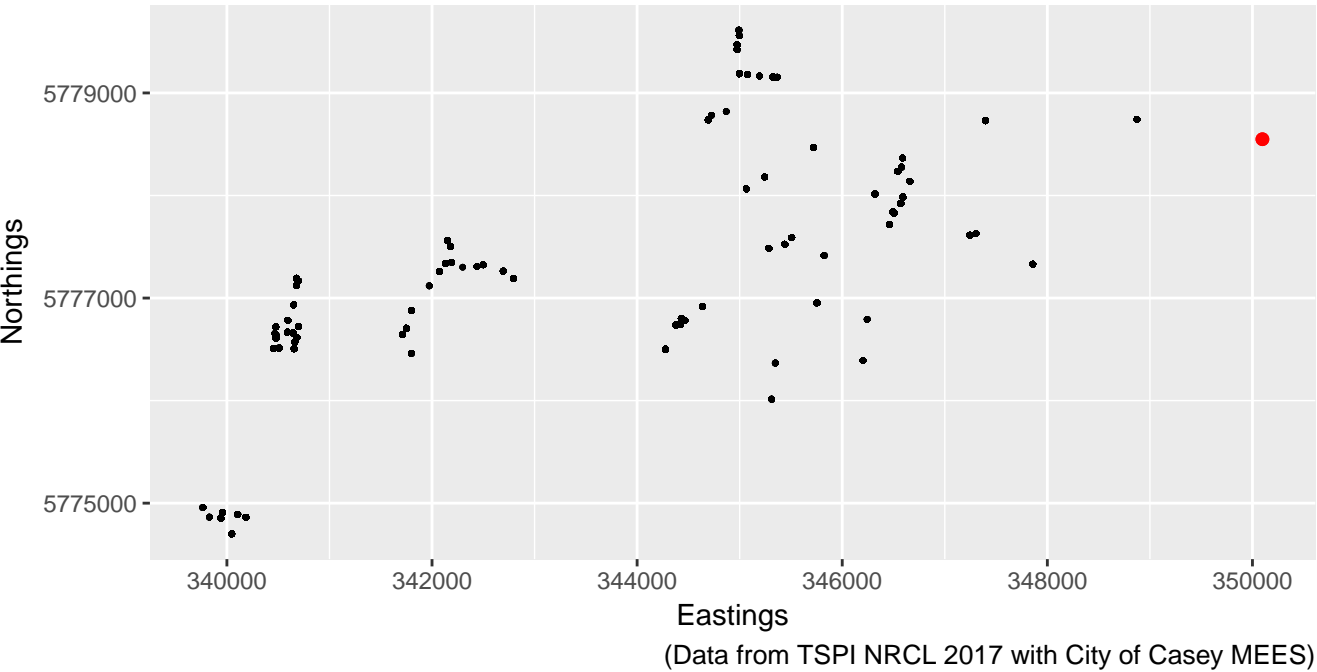
(Data from TSPI NRCL 2017 with City of Casey MEES)

Distribution of unidentified
with camera stations, as 'black dot'



Distribution of New Holland Honeyeater

with camera stations, as 'black dot'



Distribution of Jacky Lizard

with camera stations, as 'black dot'

